



PT. ALUMINDO BERKAT SEJAHTERA  
ALUMINIUM EXTRUSIONS

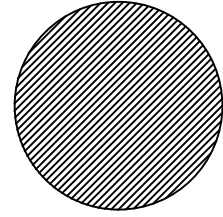
DRAWING NUMBER

SECTION NUMBER

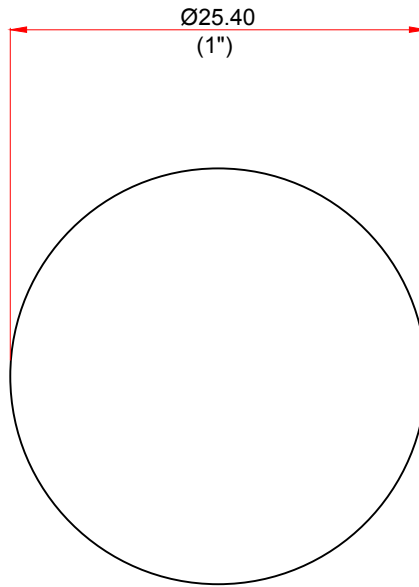
REF. NO. :

15050

MATING WITH SECTION NO



ACTUAL SIZE  
SCALE 1:1



SCALE 2:1

TOLERANCE	
DIMENSION	TOLERANCE
> 0 - 3	± 0.15
> 3 - 6	± 0.18
> 6 - 12	± 0.20
> 12 - 20	± 0.23
> 20 - 25	± 0.25
> 25 - 40	± 0.31
> 40 - 50	± 0.36
> 50 - 100	± 0.61
> 100 - 150	± 0.86
> 150 - 200	± 1.12

CUSTOMER APPROVED
MARKETING APPROVED
OFFICE

**ANGULARITY = ± 1°**

REMOVE SHARP CORNERS WITH MAX. 0.40 RADIUS

ALL DIMENSION ARE IN MILIMETER

\* DENOTE IMPORTANT DIMENSION

TOLERANCES ARE ACCORDING TO STANDARD UNLESS MENTIONED

SCALE	1:1	DATE	CUSTOMER		EXTRUDED PRODUCT			
DRAWN	HASAN	29-08-2022	UMUM		<input checked="" type="checkbox"/>	<input type="checkbox"/>	<input type="checkbox"/>	<input type="checkbox"/>
CHECKED					SOLID	HOLLOW	SEMI HOLLOW	SPECIAL
APPLICATION			TITLE		TYPE FIT			
CUSTOMER CODE	-		MATERIAL ALLOY	6063-T5	<input type="checkbox"/>	<input type="checkbox"/>	<input type="checkbox"/>	
ESTIMATED CALCULATE			SURFACE FINISH	MF	Ø BILLET	HOLE	EXT. RATIO	
AREA	506.707	MM <sup>2</sup>	LENGTH (M)	6m	5"	1		
WEIGHT	1.510	KG/M	FACTOR					
TOTAL PERIMETER	79.79	MM	CCD					

REQUEST DATE		DIES SIZE : 200 x 140	BOLSTER : Ready
DELIVERY DATE			